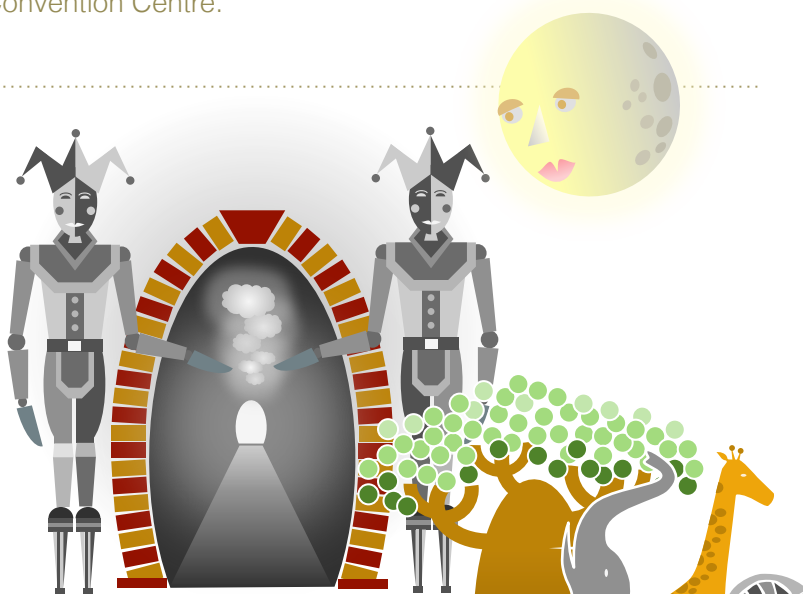


PAVILIONS

1 MAGICAL ENTRYWAY

The portal bridging the real and the fantastic. A real head-turner – visitors are greeted by a tunnel-like entryway flanked by characters on stilts. Clouds of spun sugar float overhead, while a giant pastry moon looks on with blinking eyes.



2 NATURE

An ode to the jungle – with a life-sized elephant, a giraffe, a zebra, a family of hippos, and monkeys, set around a Baobab tree with edible mint leaves – all rendered in chocolate!



3 THE TEA ROOM

An invitation to a wedding – dominated by an 8-metre-tall cake and a massive edible wall measuring 8 metres long and 4 metres tall.

ESCRIBÀ LUXURY BOUTIQUE

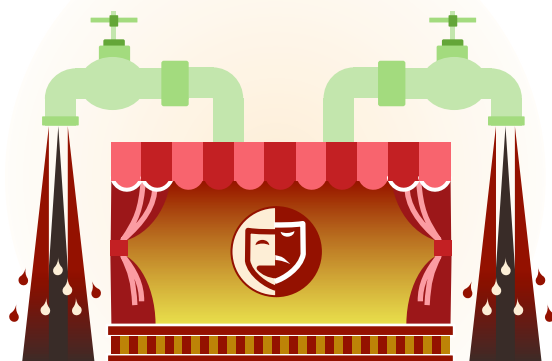
Haute Couture with a twist! High-end confectionery creations, which include caramel rings, high-heel shoes and sugar flowers, with an open kitchen for ongoing in-store demonstration. It's like being transported to Pasteleria Escribà itself!



4 CHOCOLATE THEATRE

A profoundly choc-tastic set of stage performances of 'The Story of Chocolate'.

Visitors get to enjoy chocolate on tap, and take part in chocolate bodypainting. Now *that's* indulgence!





5

THE BRIDGE FROM BARCELONA TO ASIA

A visually stunning showcase of confectionary replicas of Escribà's top selection of historical works. This is complemented with a presentation of new Escribà masterpieces themed around Barcelona and Asia – and the creation of a cultural bridge between the two.

6

ESCRIBÀ ACADEMY

An added dimension to the Fantasia experience for all passionate fans of pastry and confections – working with the masters in four tantalising areas:

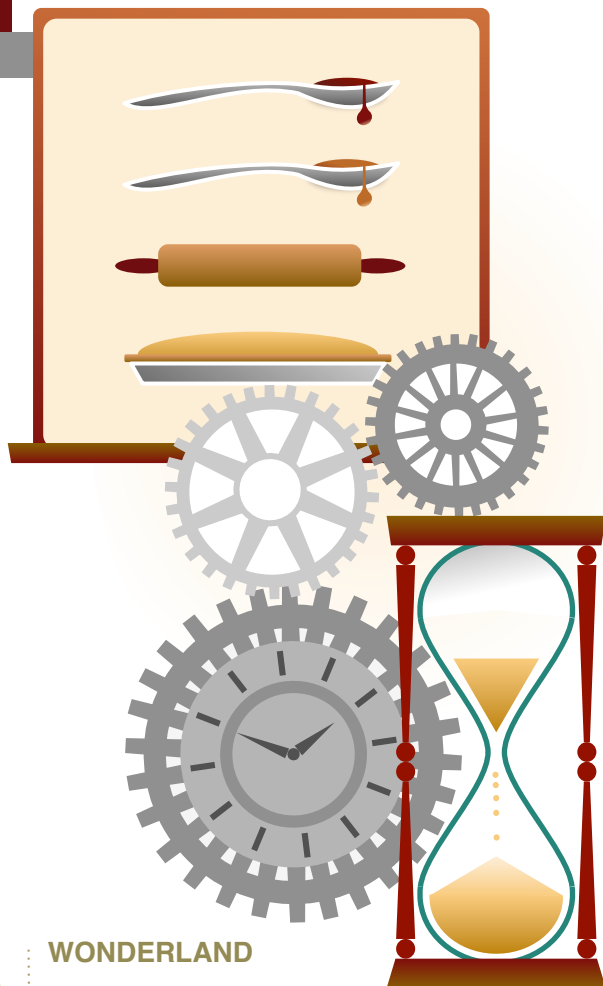
Chocolate | Caramel | Fondant | Pastry

7

FUTURE OF PASTRY

What is the pastry of the future going to look like? A sneak peek into the 'R&D lab' – essentially Christian Escribà and Patricia Schmidt's vision – of new mouth-watering elements. What elements specifically?

That, would be a surprise!



8

WONDERLAND

This one's for the kids!

An exciting mix of 'dry' and 'wet' play areas for the young and the young-at-heart.

A 2000m² play area fashioned like an imaginary mini city. Kids can participate in a variety of activities like 'cake wars', building structures using foam bricks, and other exciting games. To add spice, kids will be able to make their way around this vast playscape on little bicycles.

